

4

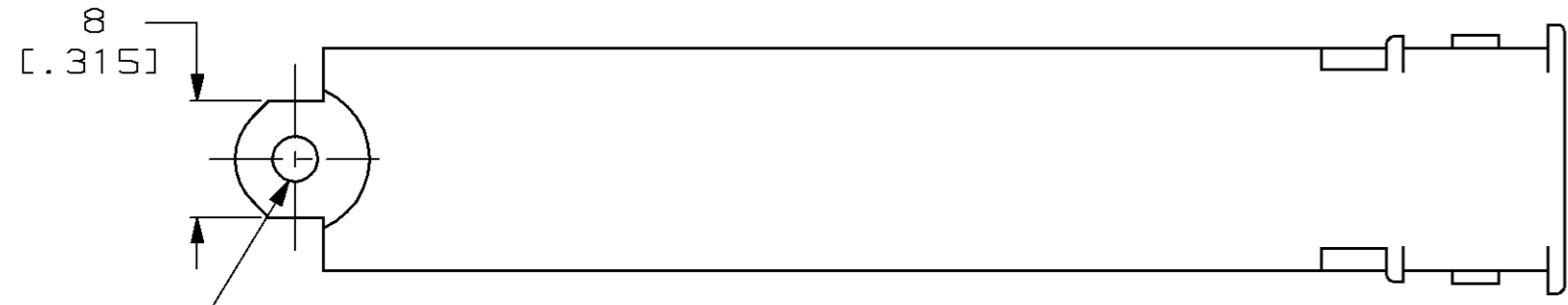
3

2

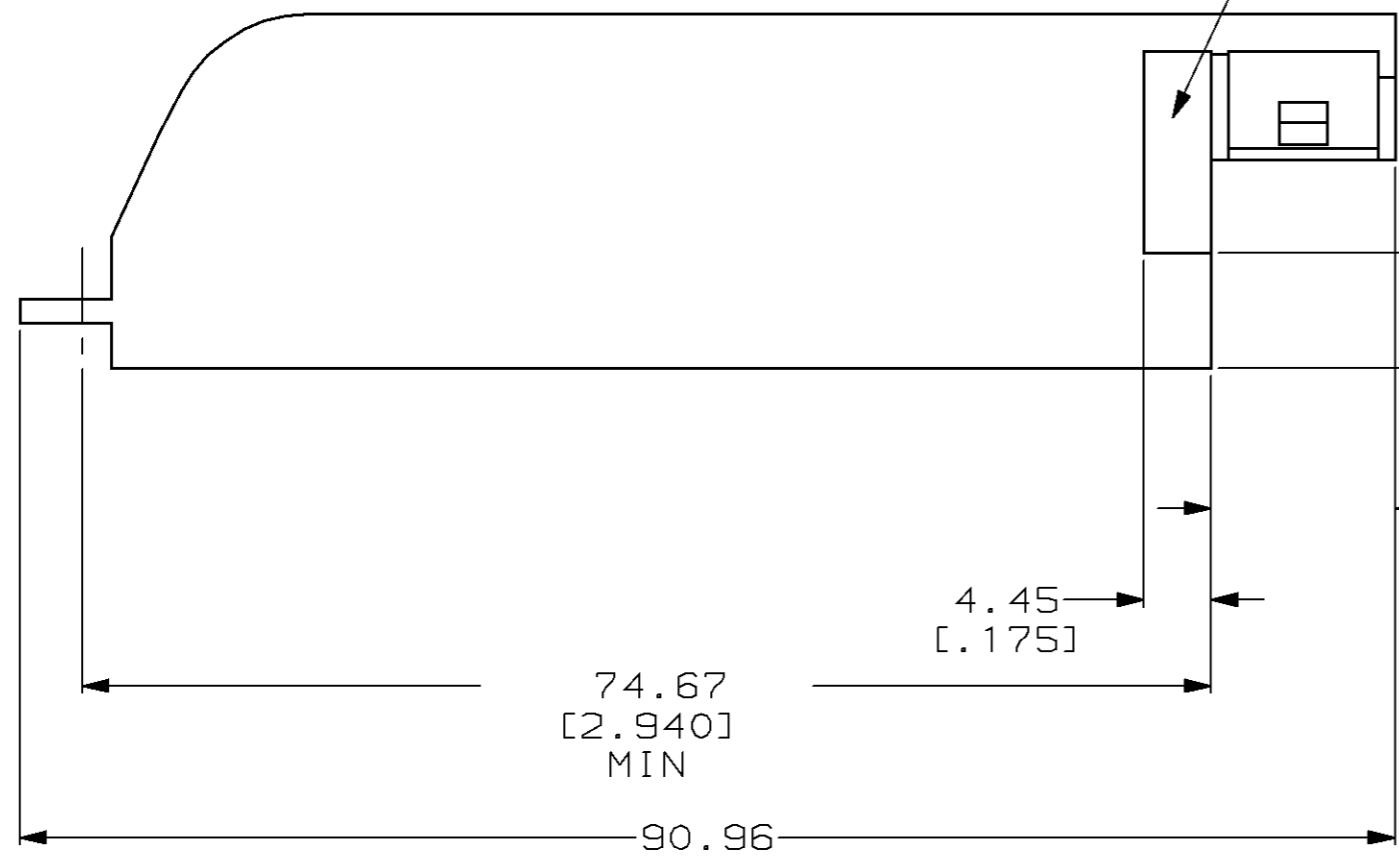
1

THIS DRAWING IS UNPUBLISHED. RELEASED FOR PUBLICATION, 19 .
 © COPYRIGHT 19 BY AMP INCORPORATED. ALL RIGHTS RESERVED.

LOC	DIST	REVISIONS			
P	LTR	DESCRIPTION	DATE	DWN	APVD
AA	20	A	REDRAWN PER EC 0502-0051-98	21 JAN 98	CW MH



8
[.315]
Ø3.15
[.124]
MAX



1.45 [.057]
MIN DEEP RECESS

74.67
[2.940]
MIN

90.96
[3.581]
REF

4.45
[.175]

7.62
[.300]

12.17
[.479]
REF

3.3
[.130]
REF

18.42
[.725]
REF

23.55
[.927]
MAX

13.77
[.542]
REF

15.37
[.605]
MAX

GRAY	552617-4
BLACK	552617-1
COLOR	PART NO.

THIS DRAWING IS A CONTROLLED DOCUMENT.		DWN T. PITTS 02JUL76	AMP AMP Incorporated Harrisburg, PA 17105-3608	
DIMENSIONS: mm [INCHES]		CHK J. COMPTON 02JUL76		
TOLERANCES UNLESS OTHERWISE SPECIFIED:		APVD G.H. FOSTER 02JUL76	NAME COVER, SLIDE-ON, 50 POSN, CHAMP®	
0 PLC ±-		PRODUCT SPEC	SIZE	
1 PLC ±-		APPLICATION SPEC	CAGE CODE	
2 PLC ±-		WEIGHT	DRAWING NO	
3 PLC ±.005		CUSTOMER DRAWING	RESTRICTED TO	
4 PLC ±-		SCALE 2:1	SHEET 1 OF 1	
ANGLES ±-		SCALE 2:1	REV A	
MATERIAL NORYL 990		FINISH -	A3 00779 C= 552617	